


ASPIRING GLOBAL GEOPARK SCHELDT DELTA


OUR ASPIRATION

To create a transboundary,
UNESCO certified GeoPark

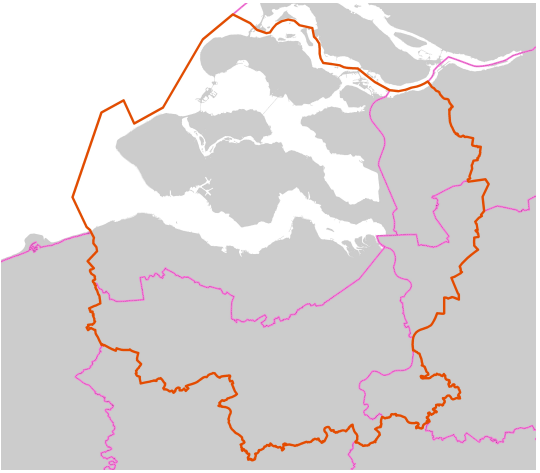
Definition
"A unified area that advances the protection and use of *geological heritage* in a sustainable way"




United Nations
Educational, Scientific and
Cultural Organization



- UNESCO
- Global
- Geoparks



GeoPark Schelde Delta



The slide contains text on the left side and a map on the right. The map shows the Scheldt Delta region with an orange outline for the entire area and a pink outline for a specific sub-region. The UNESCO logo is a classical building facade, and the Global Geoparks logo is a stylized green 'G' with a wave-like shape. A vertical decorative bar with colored segments is on the far left edge.

AN UNESCO QUALITY LABEL

A Geopark is an area where:

- Geological heritage and landscape with international value are managed en developed in a sustainable way
- Geology, cultural history and nature define the identity
- Sites tell the story and make it visible and perceptible
- Education and sustainable tourism are import
- Initiatives and local support are crucial



United Nations
Educational, Scientific and
Cultural Organization

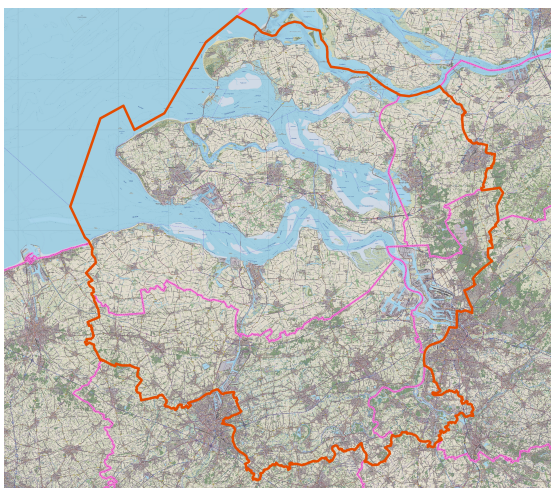


UNESCO
Global
Geoparks

GeoPark Schelde Delta



A TRANSBOUNDARY GEOPARK



- 2 Countries
- 4 Provinces
- Area 5500 km²
- 1.5 million inhabitants
- 59 municipalities



- Great contrasts:
 - Rural-urban
 - Clay-Sand
 - High-Low
 - Protestant-Roman Catholic

GeoPark Schelde Delta



DYNAMIC ESTUARY WITH TIDAL RIVER SCHELDT

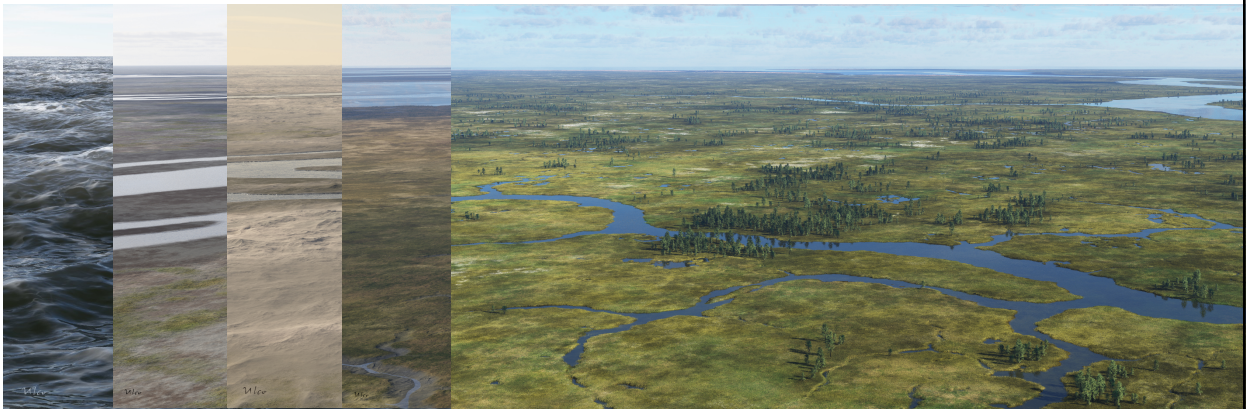
60 million of years on the tides of time and climate (Paleocene – Holocene)



GeoPark Schelde Delta



GEOLOGICAL PROCESSES AND THE TRANSFORMATION OF LANDSCAPE IN THE LAST 15.000 YEARS, THE LANDSCAPE TRANSFORMED SEVERAL TIMES



33 milion years ago 11.000 years ago 3.000 years ago
15.000 years ago 4.700 years ago

GeoPark Schelde Delta



LIVING ON THE TIDES OF TIME AND CLIMATE

GEOLOGICAL AND GEOMORPHOLOGICAL HERITAGE



GeoPark Schelde Delta



LIVING ON THE TIDES OF TIME AND CLIMATE

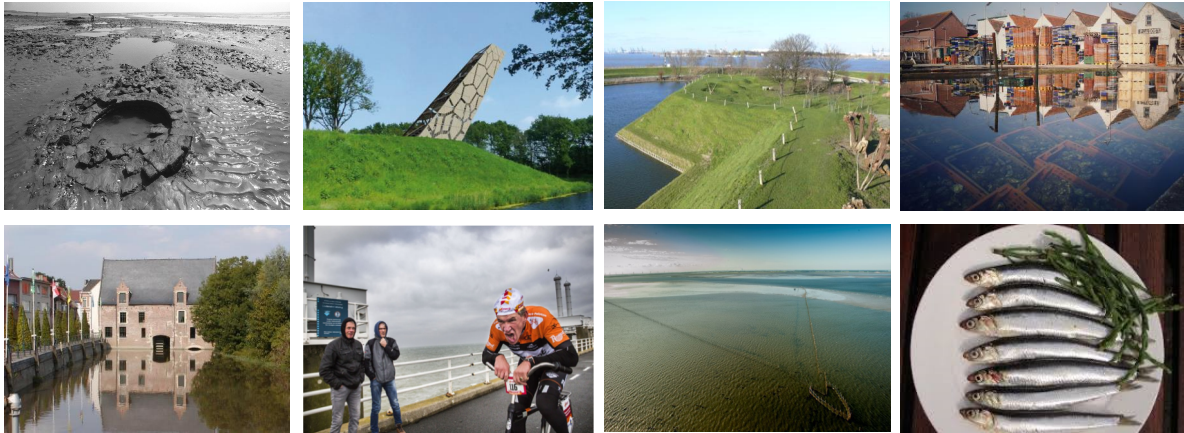
TOURISM AND LEISURE: EXPERIENCE GEOLOGY



GeoPark Schelde Delta



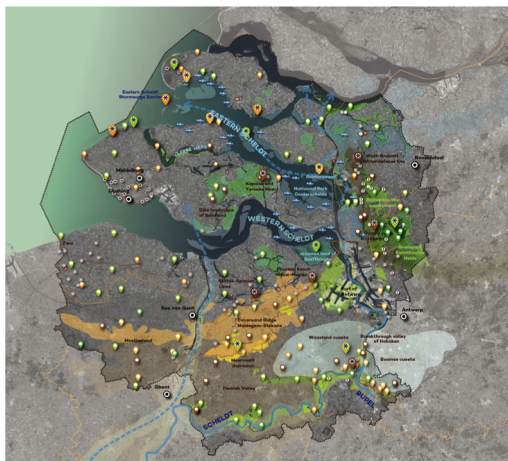
I EXPERIENCE CULTURAL HISTORY



GeoPark Schelde Delta



HARVEST

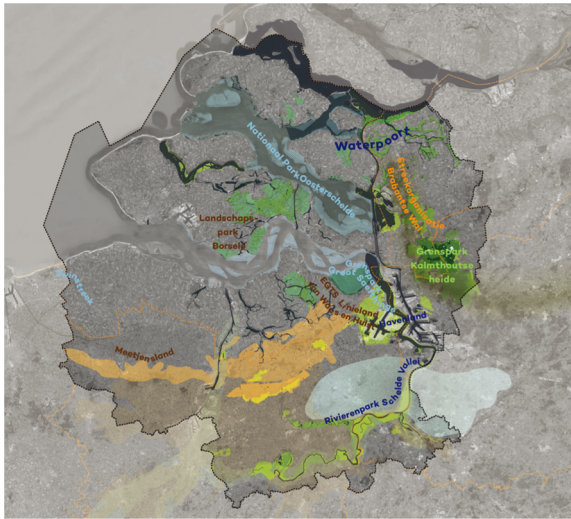


- site of geological morphological interest
- atlantic wall
- site of natural value
- former river course
- site of landscape value
- present river course
- site of socio-cultural historic significance
- nature
- site of touristic educational value
- cities as a gateway
- site of military significance
- special geosite
- estate
- nature acces points
- drowned village
- aquaculture
- fortress
- defense line

GeoPark Schelde Delta



TOURISTIC BRANDS



GeoPark Schelde Delta



HUMAN INTERVENTIONS



- Roman agricultural techniques
- Deforestation
- Building dikes 1000 years ago
- Peat excavation 500 years ago
- Military conflicts for ages
- Continuous land reclamation

GeoPark Schelde Delta



| SO WHAT HAPPENED?

EFFECT OF HUMAN INTERVENTION: FLOODS AND LOST LAND



- Many catastrophic floods and lost land
- 200 drowned villages within the GeoPark area
- Remains of it are still visible at low tide

GeoPark Schelde Delta



NEW NATURAL HERITAGE

| DISAPPEARING BORDERS BY WORKING TOGETHER



- Show the past (geological & cultural) and learn from the past:
 - Education and tourism
 - GeoPark Site visits
 - Inspire to create a sustainable, 'climate-proof' environment



20 GRENSPARKGASTEREN

#GRENSPARKCHALLENGE

GeoPark Schelde Delta



| AND HOW DID WE REACT?

RECENT HERITAGE: TO PREVENT FUTURE FLOODS

“DELTA Works” - Eastern Scheldt Storm Surge Barrier



Technical solutions

“SIGMA Plan” - Scheldt Flood Control Area Kruibeke



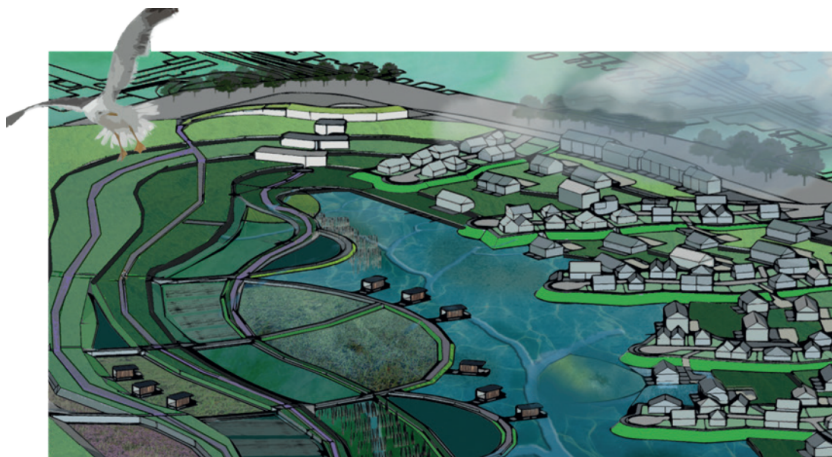
Nature based solutions

GeoPark Schelde Delta



INNOVATIVE NEW CONCEPTS

| WHAT MIGHT HAPPEN IN THE FUTURE



New Concepts of Living with Water have to be made

- **New concepts of adaptation:**
 - Living with water
 - Use the power of nature
 - Learn from the past
- **Community involvement:**
 - Awareness
 - Participation
 - Empowerment

GeoPark Schelde Delta



